

(4) Mounting Holes for M5 [#10] Screws. See Detail A for top mounting hole dimensions

Keypad

Nameplate

Cooling fan location

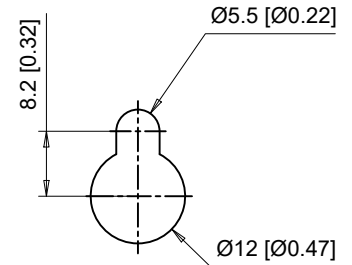


4.5 [0.18]

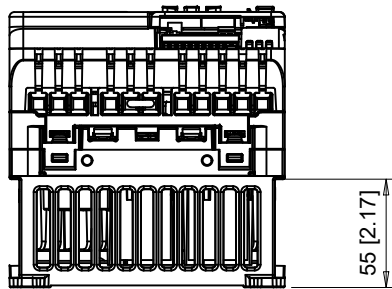
5 [0.20]

2.7 [0.11]

140 [5.51]



Detail A
Top mounting hole dimensions
Scale 1:1



C/C: GA50□	INPUT VOLTAGE (VAC)	WEIGHT Kg (lb)	COOLING FANS
2030□□	200 TO 240	3.4 (7.5)	1
2042□□	3-PHASE	3.6 (7.9)	2
4018□□	380 TO 480	3.0 (6.6)	1
4023□□	3-PHASE	3.2 (7.1)	1

□ denotes A-Z

YASKAWA

UNITS MM [IN]
SCALE 1:4

DRWN. J. MATTAS 5-31-19
CHKD. J. PIOTROWSKI 7-30-19
TECH. L. UDDIN 8-7-19
APRV. J. CAIRO 9-4-19

TITLE
GA500 DIMENSION DRAWING
FRAME SIZE 5
IP20 ENCLOSURE

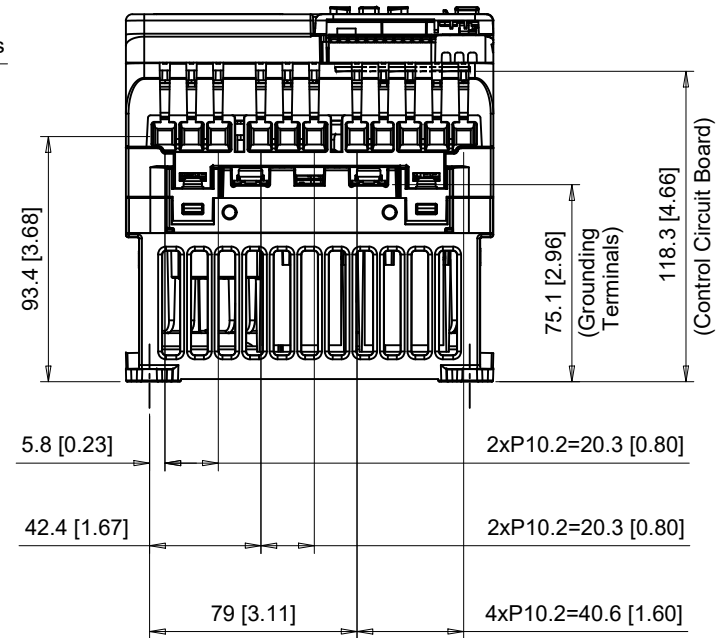
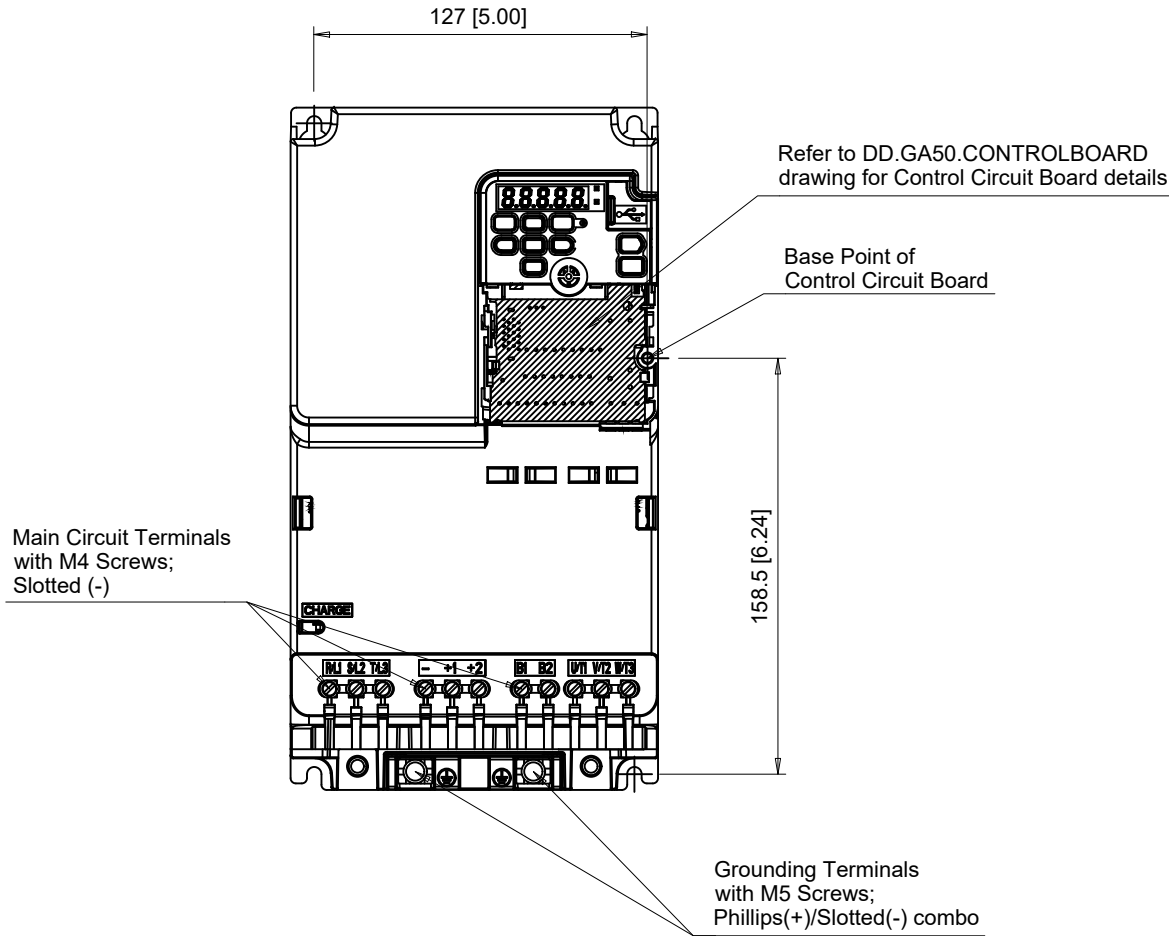
SIZE A PAGE 1 OF 4
DWG.NO. DD.GA50.FR5.IP20

REV 0

Terminal and Wiring Information for GA50□2030, GA50□4018 and GA50□4023

FRONT VIEW

BOTTOM VIEW



C/C: GA50□	TERMINAL SYMBOL	WIRE RANGE AWG (mm ²)	TERMINAL SCREW	CLAMPING TORQUE N.m. (lb.in.)
	R/L1, S/L2, T/L3	14 - 6 (2.5 - 16)	M4	1.7 (15)
2030□□□	U/T1, V/T2, W/T3	14 - 6 (2.5 - 16)	M4	1.7 (15)
4018□□□	-, +1, +2	14 - 6 (2.5 - 16)	M4	1.7 (15)
4023□□□	B1, B2	14 - 6 (2.5 - 16)	M4	1.7 (15)
	⊕	10 - 6 (6 - 16)	M5	2.0 - 2.5 (18 - 22)

□ Denotes A-Z
 Note: Refer to applicable codes and standards for proper wire type and size.

YASKAWA

UNITS MM [IN]
 SCALE 1:3

DRWN. J. MATTAS 5-31-19
 CHKD. J. PIOTROWSKI 7-30-19
 TECH. L. UDDIN 8-7-19
 APRV. J. CAIRO 9-4-19

TITLE
 GA500 DIMENSION DRAWING
 FRAME SIZE 5
 IP20 ENCLOSURE

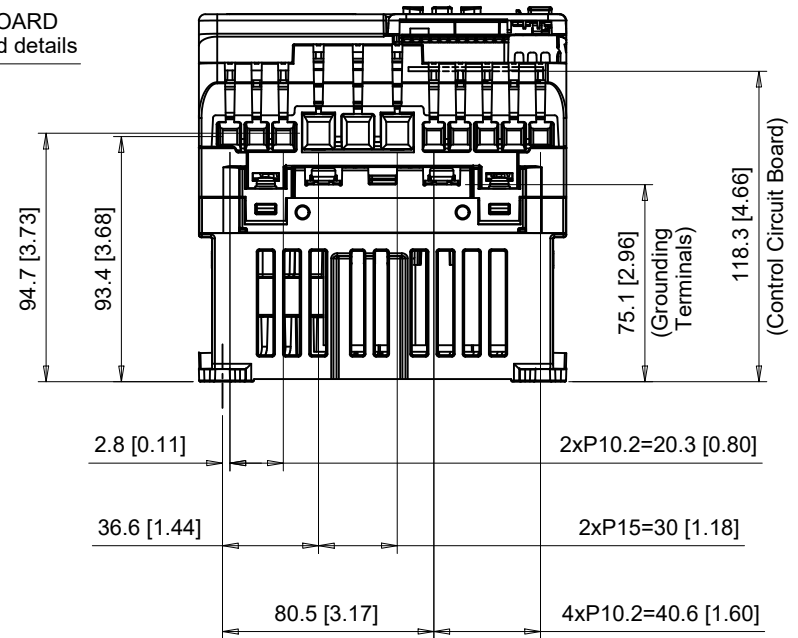
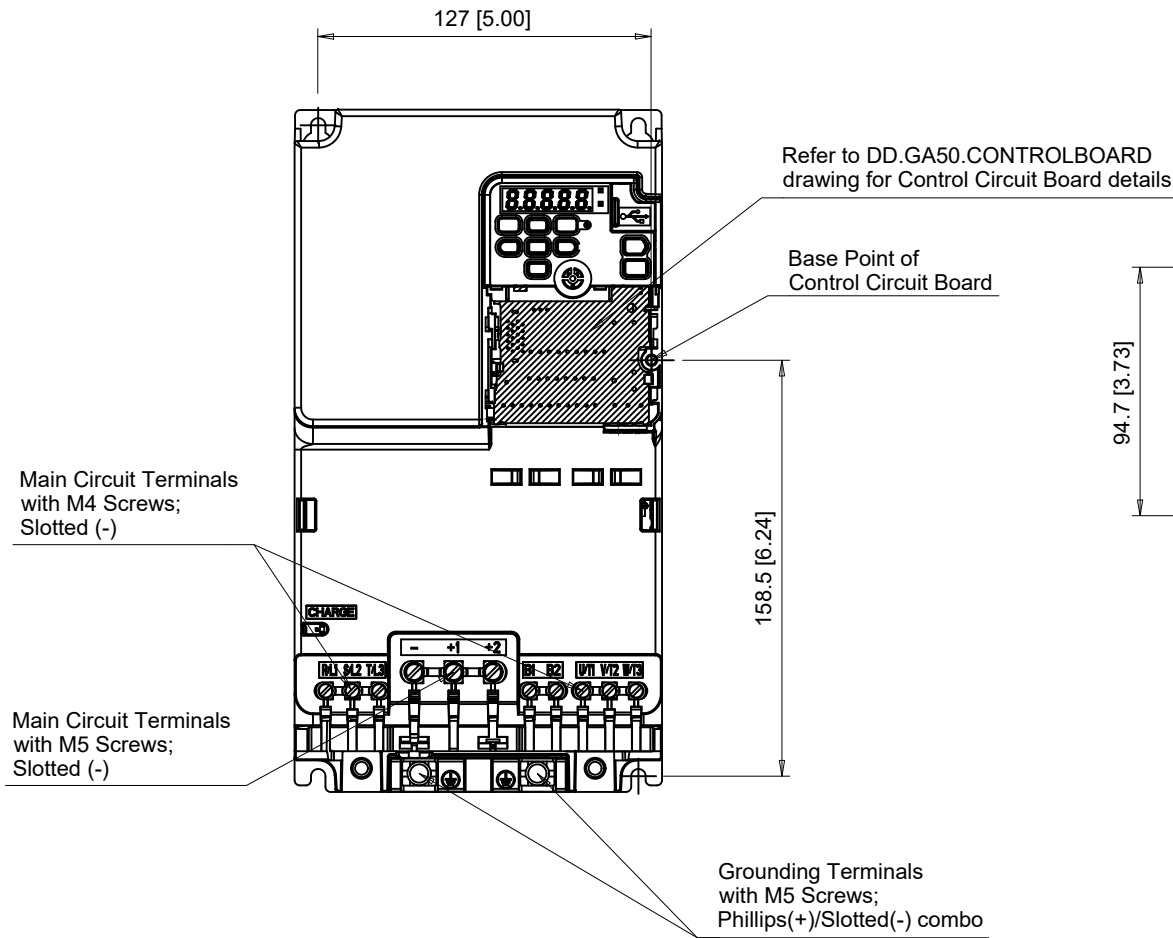
SIZE A PAGE 2 OF 4
 DWG.NO. DD.GA50.FR5.IP20

REV 0

Terminal and Wiring Information for GA50□2042

FRONT VIEW

BOTTOM VIEW



C/C:	TERMINAL SYMBOL	WIRE RANGE AWG (mm ²)	TERMINAL SCREW	CLAMPING TORQUE N.m. (lb.in.)
GA50□	R/L1, S/L2, T/L3	14 - 6 (2.5 - 16)	M4	1.7 (15)
	U/T1, V/T2, W/T3	14 - 6 (2.5 - 16)	M4	1.7 (15)
2042□□□	-, +1, +2	8 - 2 (10 - 35)	M5	4.5 (40)
	B1, B2	14 - 6 (2.5 - 16)	M4	1.7 (15)
	⊕	10 - 6 (6 - 16)	M5	2.0 - 2.5 (18 - 22)

□ Denotes A-Z

Note: Refer to applicable codes and standards for proper wire type and size.

YASKAWA

UNITS MM [IN]
SCALE 1:3

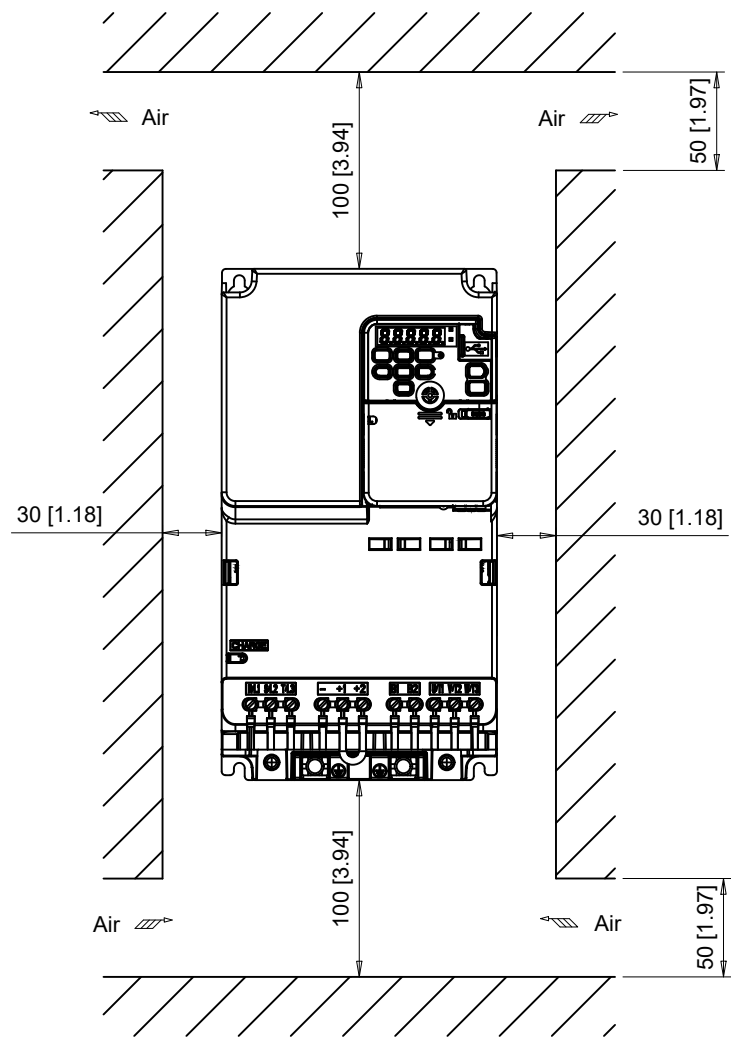
DRWN. J. MATTAS 5-31-19
CHKD. J. PIOTROWSKI 7-30-19
TECH. L. UDDIN 8-7-19
APRV. J. CAIRO 9-4-19

TITLE
GA500 DIMENSION DRAWING
FRAME SIZE 5
IP20 ENCLOSURE

SIZE A PAGE 3 OF 4
DWG.NO. DD.GA50.FR5.IP20

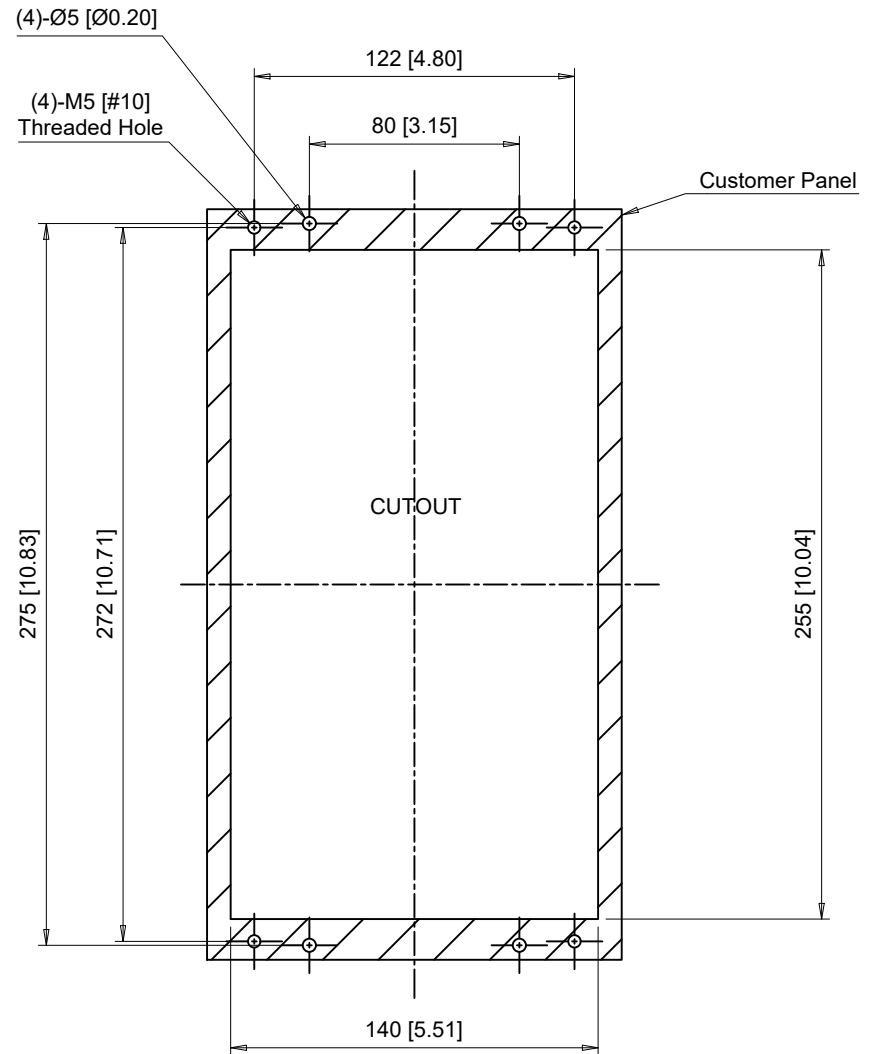
REV 0

Minimum Installation Clearances
Scale 1:4



Note:
For alternate mounting configurations, consult manual.

Panel Cutout
For External Heatsink Mounting Configuration
Scale 1:3



Notes:
Exposed heatsink minimum clearance = 60 [2.36].
Refer to external heatsink instructions document for additional details.

YASKAWA

UNITS MM [IN]
SCALE ABOVE

DRWN.	J. MATTAS	5-31-19
CHKD.	J. PIOTROWSKI	7-30-19
TECH.	L. UDDIN	8-7-19
APRV.	J. CAIRO	9-4-19

TITLE
GA500 DIMENSION DRAWING
FRAME SIZE 5
IP20 ENCLOSURE

SIZE A PAGE 4 OF 4
DWG.NO.
DD.GA50.FR5.IP20

REV
0